

A background image showing a group of business professionals in a meeting. One person in the foreground is pointing at a tablet displaying a bar chart. Other people in the background are looking at documents and talking.

## **BUSINESS & IT CONTINUITY GAP ASSESSMENT & PLANNING**

When business is disrupted due to any natural or human-made event, it can cost money. Lost revenues plus extra expenses mean reduced profits. Insurance does not cover all costs and cannot replace customers that switch to the competition.

Business continuity planning is the creation of a strategy through the recognition of threats and risks facing a company, with an eye to ensure that personnel and assets are protected and able to function in the event of a disaster. IT continuity planning deals with developing resilience in IT systems and IT assets after a disastrous interruption.

# MOST COMMON BUSINESS & IT CONTINUITY RISKS

Cyber-attack

Data breach

Unplanned IT or telecom outage

Interruption to utility supply

Adverse weather

Act of terrorism

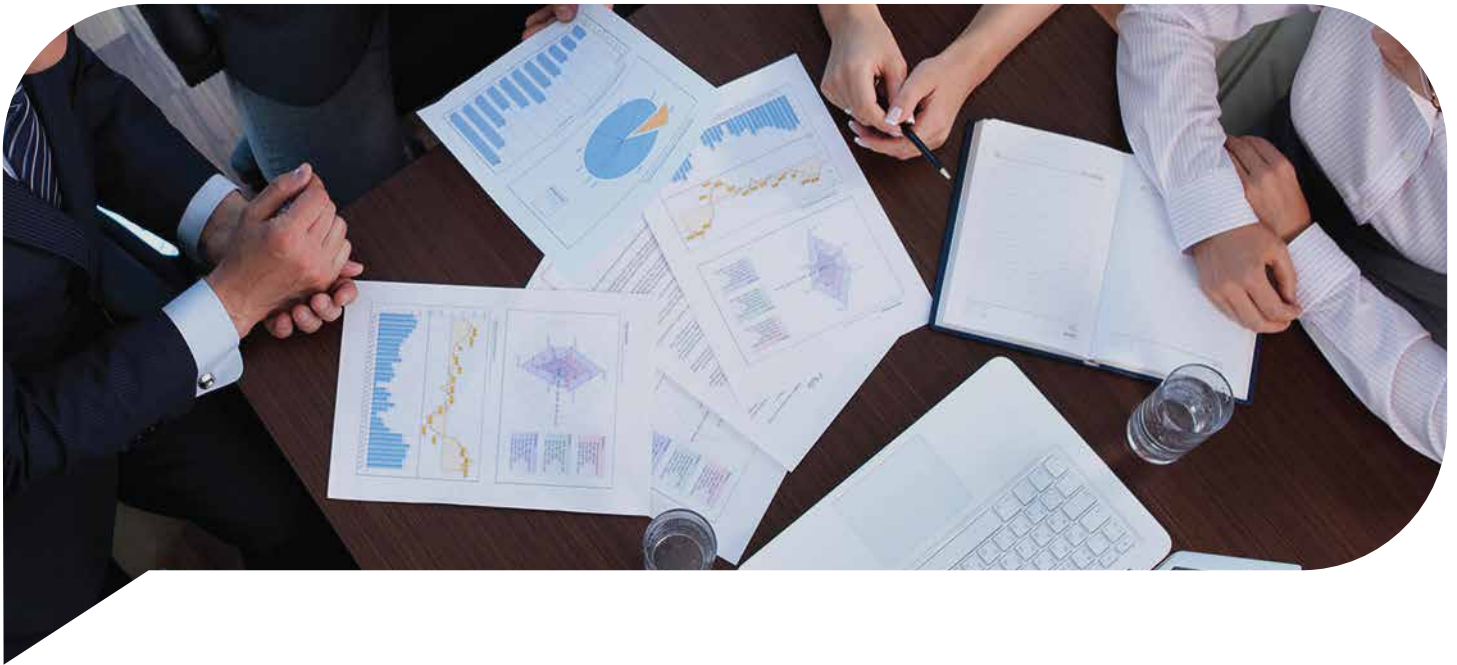
Security incident

Fire

Supply chain disruption

Transport network disruption





## WHY BUSINESS & IT CONTINUITY GAP ASSESSMENT?

Business & IT Continuity Gap Assessment assess the effectiveness of your current business & IT continuity arrangements and provide a clear understanding of your organization's shortcomings. Once the gaps are identified, tailored improvement plan is developed that provides a foundation for setting priorities, assigning ownership, allocating investments of time, money and human resources as well as for measuring and improving compliance with the stated guidelines.

## WHAT ARE THE RELEVANT STANDARDS AND BENCHMARKS?

**ISO 22301** specifies requirements to plan, establish, implement, operate, monitor, review, maintain and continually improve a documented management system to protect against, reduce the likelihood of occurrence, prepare for, respond to, and recover from disruptive incidents when they arise.

**ISO/IEC 27031** describes the concepts and principles of information and communication technology (ICT) readiness for business continuity, and provides a framework of methods and processes to identify and specify all aspects (such as performance criteria, design, and implementation) for improving an organization's ICT readiness to ensure business continuity.



## BUSINESS BEAM HELPS YOU IN IDENTIFYING GAPS

With the help of internationally accepted best practices, standards and frameworks as benchmarks; we help you in identifying business and IT continuity gaps. We also develop tailored and prioritized gaps-closure plan providing you the complete roadmap about how to bridge the identified gaps.

Salient features of our services are as follows:

**Holistic approach:** We believe in taking a holistic approach and covering the given scope end-to-end from business and IT continuity perspective. It means that all practices, documents, roles, responsibilities and individuals within the agreed scope are covered in our assessment exercise.

**In-depth coverage:** We review your practices, documented and undocumented, and map them against the best practices identified by the international standards. Our gap-assessment report is developed at practice-level, providing you a comprehensive and in-depth view of your current continuity posture.

**Capability assessment:** We don't simply identify the gaps. Being process improvement consultants, we assess and document capability level of your continuity processes and practices on the scale of 0 to 5. This helps you in knowing the exact capabilities your current processes and practices.

**Mentoring on identifying target continuity profile:** We discuss, understand, mentor and facilitate your teams in setting business and IT continuity targets exclusively based on your current organizational setup, budgets, priorities and plans.

**Highly customized gap-closure plan:** Our gaps closure plan is highly customized and prioritized as per the identified gaps and your organizational needs. We present detailed gap closure roadmap along with suggested roles and responsibilities, and estimated timelines and efforts.



## **ABOUT BUSINESS BEAM**

Business Beam is a global consulting and training firm that helps companies solve problems in governance, operations, quality, services, projects, information security, business continuity, human resources, risk and internal audit.

Established in 2004 with a vision to drive organizations towards corporate excellence, Business Beam has served hundreds of organizations of various sizes, different domains and geographical regions. Business Beam partners with clients to convert them into high-performance businesses and governments. We feel honored to help them grow!

Business Beam has served hundreds of organizations of various sizes, different domains and geographical regions including USA, Saudi Arabia, UAE, Oman, Bangladesh, Hong Kong and Pakistan.

Contact us at [contact@businessbeam.com](mailto:contact@businessbeam.com)